

Wendover Parish Council will represent the community of Wendover by providing leadership and opportunities, enabling Wendover to be a vibrant and inspirational place in which to live, work or visit.



WENDOVER PARISH COUNCIL

Summer Newsletter— June 2010

Chairman's message:

Dear All,
Our primary concern over the last few months, which will continue to be highlighted for some time, is the impact of HS2.

Wendover Parish Council has responded strongly against the Government's proposals for a preferred route that runs through Wendover, following a review of the available reports with a vote to oppose the HS2 proposal and to support the local groups for the benefit of the community.

As they stand the proposals could substantially change our vibrant community and local economy.

Wendover is a tourist destination, but with the loss of Areas of Outstanding Natural Beauty, walks and quiet areas, the tourists will not come, in turn affecting local business. While Wendover has largely survived the recession the town will suffer economically through lack of business and housing blight.

A further concern is the proposed Exceptional Hardship Scheme, this is an interim scheme and will last just until the route

is confirmed, after which the compensation scheme is unknown. It is intended to help people by providing compensation for those with a pressing need to sell their properties.

While we recognised the importance of introducing such a scheme, it was felt that the proposed scheme is too restrictive, imposing hardship on the local community. At its meeting on 4 May, WPC decided to submit an alternative proposal that would support the property market at unblighted levels and include all properties affected by the proposed route.

The new Government has extended the scheme to 17 June. I urge everyone to respond to this, even if you believe you are not directly affected, as the results of this scheme will impact the community as a whole. More details can be found in the Clock Tower.

On the lighter and brighter side of our activities Wendover Parish Council has won the prestigious award for Much Improved Council of 2010. It was a long, hard journey but having this recognised is the

icing on the cake.

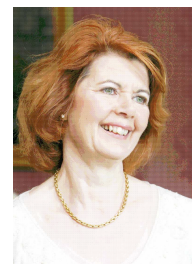
During our Annual Parish meeting I reported on the past year of Council activity and also some projects for the coming year. Dr Loosemore gave us an excellent presentation on Olympics 2008, comparing them to London 2012—clearly these will be very different in flavour!

On 22 May we were pleased to welcome our French friends from Liffre. Many thanks go to John Hampden School for providing the Morris and Maypole dancing.

Finally, please welcome Jill Bottomley and David Maisey, new staff in the Tourist Centre. Jill created the lovely Easter flower display for the window while David ran the London marathon in an amazing time raising hundreds of pounds for the Chilterns MS Centre.

Ellie Sue Joffe-Hunt
Chairman,

Wendover Parish Council



National Award for WPC

Chair, Cllr Sue Toft-Hunt and Clerk, Fiona Lippmann travelled to the ceremony in London to receive the award from NALC and Standards for England. The lovely, engraved trophy and certificate can be seen proudly displayed in the Clock Tower.



In announcing the awards the judges stated that they found the nomination to be ‘inspirational’.

Cllr Sue Toft-Hunt said, “we are absolutely delighted with the award. It recognises the

work that has been done by everyone in the Council in embracing the changes. The key criteria for the award were the improvements in operation and process and how we have improved our work and representation for the Parish. It shows that we have stopped being inwards looking and are

now able to truly focus on the local community”. Cllr Mrs Toft-Hunt has also been invited to speak about Wendover’s experiences at the annual Assembly for Standards in the Autumn.

New Kyak for Wendovers’ Scouts

Cllrs Cheryl Stamper and Karen Saunders were taken out for a trip in the new kyak donated by Wendover Parish Council to the Wendover Scout Group



Overview of HS2 Impacts on Wendover

The preferred route for HS2 enters the Parish in the south near Wendover Dean with a viaduct 450m long and up to 17m high, then swoops downhill on an embankment to cross the railway near the A413 roundabout. On another large viaduct, 500m long and nearly 10m high, after passing under Bacombe Lane it enters a tunnel under Ellesborough Road. This tunnel will be created by a cut and cover technique, resulting in the loss of the row of cottages above the station. On emerging the line cuts across the cricket field and roughly follows the line of the by-pass on another embankment of 5m or more. The Parish Church is within

the 300m noise corridor for ‘significant noise levels’ and prime areas of quiet recreation such as Hampden Pond and Witchell, will be un-useable for such. Wendover Woods may not be the pleasant, peaceful place it is now. Coombe Hill as a great Chilterns landmark will have a great view and therefore a good earful of the HS2 line as a scar all across the valley.

There would be loss of the Cricket Club facilities—one pitch under the railway, the other so close as to make play impossible. Loss of the Memorial Wood—only just planted this will be destroyed by the cut and cover tunnel. Loss of walks, cycle ways, and bridleway network—

ancient paths will be cut and fall into disuse.

So far the mitigation studies have not been published, but it is clear that simple noise reduction will not be enough if this goes ahead. More details on HS2 are due to be published in the coming months and the Council will be reviewing these carefully in order to respond in the Autumn Consultations.

The role of the Council will be to work with large groups to address the big issues about the route itself and then to ensure that Wendover is adequately considered if the route remains unchanged.

Maps can be viewed at The Clock Tower.

“inspirational...”

How can your Parish Council contribute to planning decisions?

Many residents find planning restrictions a major irritant.

Perhaps they are, but they exist to help maintain the character and cohesion of a community.

Wendover's Planning Authority is AVDC; it is this body which makes the final decisions. The role of the Parish Council is to reflect the opinion of the community by offering advice to AVDC. The latter should take this advice into consideration, but does not necessarily have to follow it. Final decisions may then be made by the officers should they deem the case to be clear cut.

Sometimes there is a difference of opinion in the interpretation of the regulations and so the application goes to a Development Control Committee. Consideration is given to both verbal and

written evidence before a decision is made.

Decisions made by both Parish and District Councils are not haphazard but based on regulations. These are too many and complex to list here, but examples of which are: overlooking and loss of privacy will be considered, but loss of view will not; the nature of the proposal, but the applicant's motives will not; loss of ecological habitats, but loss of value to property will not. I could go on, but you will find the list a good cure for insomnia !!

AVDC has published some useful pamphlets and the Parish Council are always ready to give advice.

Many of the planning proposals that the Parish Council receive have small effect on the locality. The decisions which have a

profound effect on our community and which could change the character of our environment permanently are not in the gift of local government.

Should a government department wish to slice a piece off Wendover, such as HS2, then the Parish Council would not be part of the decision process, but can only hope that their comments are taken into account. Those who stride the corridors of power in Westminster, and other such distant and august places will decide our town's future, while an act of Parliament will take care of all the petty regulations that you and I have to abide by when wanting to erect a conservatory and add a room over the garage.

Sometimes the planning regulations can be more than just an irritant!

"comments are taken into account"

Villagers come out to enjoy the sun and traditional past times with our French friends

Wendover Twinning Society and Wendover Parish Council were both delighted and relieved at the lovely weather to welcome the visitors from Liffre and enjoy the traditional activities on the Manor Waste.

The RAF Band played, traditional lace making and spinning were demonstrated whilst the local children from John Hampden School danced around the maypole and morris danced beautifully in the hot summer sun.

The visitors cooked and served pancakes, pastries and cider whilst others demonstrated traditional French games.

Wendover Parish Council

The Clock Tower
High Street

Phone: 01296 623056
Fax 0871 236 1550
Email: clerk@wendover-pc.gov.uk

Recreation Matters

Ashbrook Park— Following on from the encouraging feedback from the community after last year's event, another Fun in the Park will be held on Saturday, 28th August. So please put the date in your diary for an afternoon of family entertainment, games and more.

London Road Skate Park - The long awaited BMX skills track is finally being installed. It is anticipated that it will be finished in time for the Cycle Event on 12 June.

At last, the contract has been approved for the pedestrian crossing, all we are waiting for is the contractor to start.

One worrying note, an outbreak of vandalism against the existing equipment has been noticed. This vandalism costs the Parish Council precious funds to repair and the replacement of safety matting has not only a cost implication, but the safety of the users of the equipment is at stake. It is sincerely hoped that the perpetrators will realise the burden of cost and safety they are causing the other users and local residents and desist this destructive behaviour.

Hampden Pond—The Dept of the Environment has offered to improve disabled access to the pond as well as some other improvements to the facility. We are awaiting the detailed proposals, but the outline ideas look absolutely fantastic.

Hamden Meadow—For those of you who use the meadow play area, you will be aware that some of the play equipment was looking tired and an improvement was called for. Thanks to a grant from AVDC of £6,000 being added to the Parish Council savings pot, a few pieces of new equipment have been ordered that will benefit not only toddlers, but slightly older children too.

Future events on Manor Waste

Saturday, 19 June

Local Produce Market

9 am - 1 pm

~

Saturday, 3 July

Melody Room Jazz

Band

11 am - 1 pm

~

Saturday, 11 July

Bike and Trike Event

in aid of

MacMillan Cancer

Support

~

Saturday, 17 July

Local Produce Market

9 am - 1 pm

~

Saturday, 17 July

Local Produce Market

9 am - 1 pm

~

Saturday, 7 August

Circus Unlimited

11 am - 1 pm

~

Saturday, 21 August

Local Produce Market

9 am - 1 pm

~

Saturday, 28 August

**Fun in the Park
(Ashbrook)**

time tba

~

Saturday, 4 September

Umbanda Drum

Workshop

11 am - 1 pm

Wendover Community Car

Do you have a problem getting to and from the shops?

Do you have difficulty in walking and need to get out?

Wendover Community Car is there to help you

Just call: **01296 317769**

We're www.wendover-pc.gov.uk

Appointments at March 2010

Chairman of Parish Council

Cllr Mrs Sue Toft-Hunt

Vice Chairman

Cllr Stephen Worth

Amenities Committee:-

Chairman—Cllr Stephen Worth

Cllr Joel Stevens

Cllr Mrs Jennifer Ballantine

Cllr Mrs Sue Toft-Hunt

Cllr Alan Myers

Cllr Gary Thorne

Cllr Mrs Sheelagh Hoffman

Planning Committee:-

Chairman—Cllr Paul McPartlan

Cllr Mrs Sue Toft-Hunt

Cllr Mrs Jennifer Ballantine

Cllr Stephen Worth

~

Members on other Committees and Working Groups:-

Cllr Mrs Emma Carroll

Cllr Mrs Cheryl Stamper

Cllr Mrs Karen Saunders

Cllr Peter Robinson

Changes in who's who at WPC

In April, Peter Robinson was co-opted as a new Councillor. There remains one vacancy, so if you are interested in joining the team, helping the council and serving the community, please contact: The Clerk The Clock Tower, High Street, Wendover, HP22 6DU, (01296) 623056 or clerk@wendover-pc.gov.uk. At the May council meeting, as required by law, all Councillors relinquish their formal roles and all positions are open for election by the Council. Cllr Mrs Sue Toft-Hunt was again elected as Chair, with Cllr Stephen Worth as Vice Chair. Cllr Paul McPartlan was Chair of the Planning Committee, Cllr Mrs Karen Saunders as Chair of the Staffing Committee and Cllr Stephen Worth as Chair of the Amenities Committee.



Please recycle this newsletter